

MODEL 302BW

BOTTLE WASHER



Size:

Compartment:

22" wide x 32" high x 34" deep

Overall Unit:

46" wide x 80" high x 40½" deep

Note: Washer can be designed to any size to meet new or existing applications.

MODEL 302BW

The LYNX Model 302BW Bottle Washer is a heavy duty, single chamber, hydro-spray washer designed for thorough, efficient cleaning of feeder bottles and miscellaneous items used in the care of laboratory animals.

STANDARD FEATURES:

- Vertical Sliding Door
- Rotating Spray Jet System
- Personnel Safety Features
- Micro-computer Control System with Modem Package
- Automatic Ten-phase Treatment Cycle
- Temperature Guarantee
- Insulated Construction
- Incoming Utility Gauges
- Interior Illumination
- S/S Recirculation Piping and Components

CONSTRUCTION:

- All Stainless Steel Construction
- Automatic Water Level Control
- 3 HP Treatment Pump
- Stainless Steel Steam Coil Heating
- Touch Screen Operator Interface
- Programmable Cycles
- Direct Read Pump Pressure Gauge
- Double-pane Glass Window

ACCESSORIES:

- Bottom Rotary Jet Spray Header
- Bottom Fixed Jet Spray Header
- Feeder Bottle Baskets
- Transfer Cart
- Modular Walls
- Barrier Wall Flange(s)

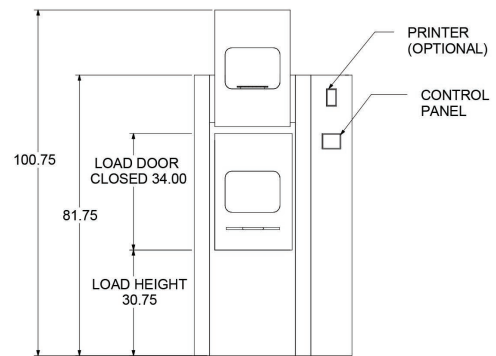
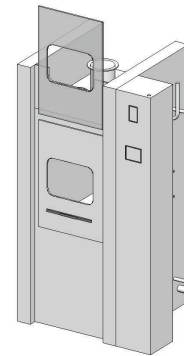
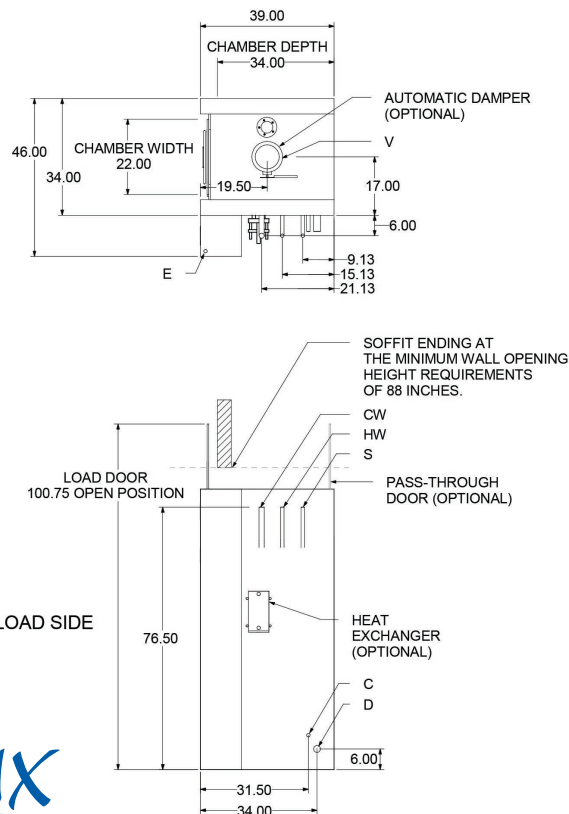
300
SERIES

E	Electrical	3-60-208/230/480 V	5 HP
S	Steam	1½" NPT	30-80 PSI 350 #/Hr Flow Rate (600 #/Hr with optional HW Heat Exchanger)
HW	Hot Water	1" NPT	35 PSI 30 GPM @ 140 °F ± 5 °F (20-140 gal/load consumption)
C	Condensate	1" NPT	
D	Drain	4" Floor Drain (Minimum)	90 GPM Flow Rate @ 200 °F
V	Vent	6" ID Duct	200 CFM Saturated Vapor @ 190 °F
A	Air	½" NPT	80 PSI 4 CFM Flow Rate
CW*	Cold Water	1" NPT	50 PSI 40 GPM @ 50 °F ± 5 °F

*CW – Required if drain discharge cool-down package is ordered

OPTIONAL FEATURES:

- Pass-thru Unit
- Right or Left Hand Services
- House Hot Water Heat Exchanger
- Automatic Damper
- Drain Discharge Cool-down
- Integral Data Collection System
- Pulsating Wash
- Non-vented Vapor Condenser
- Low Steam Pressure Package
- Air Compressor
- Seismic Tie Down
- Strip Chart Printer
- Pass-thru Door Interlock System
- Knock-down Construction
- Detergent Dispensing Systems
- pH Neutralization System
- pH Neutralization Monitoring System
- Electric Heat System



For further information, please contact:

